

EAU CLAIRE COUNTY RECYCLING DIVISION

Department of Planning and Development
721 Oxford Avenue, Suite 3344
Eau Claire, WI 54703

recycling@co.eau-claire.wi.us

(715) 839-2756

This guide contains information on how to properly dispose of the most commonly asked about items. If you do not find the material you are looking for within, please contact the Recycling coordinator.

Current as of February 2019

TABLE OF CONTENTS

Agricultural Films	3
Aluminum Cans	4
American Flags	4
Ammunition	5
Appliances	6
Asbestos	7
Auto Waste: Batteries and fuel	8
Batteries	9
Alkaline - Dry Cell Batteries	9
Button and Lithium Batteries.....	9
Rechargeable Batteries.....	9
Bicycles	10
Donate or Sell.....	10
Recycle	10
Books and Magazines	11
Donate.....	11
Hardcover Books	11
Soft Cover Books.....	11
Magazines.....	11
Carpet	11
Reuse	11
Recycle	11
Clothing	12
Donate.....	12
Consignments/ Resale	12
Construction and Demolition Debris	13
Reusable Construction Materials.....	13
Roofing Shingles	13
Asphalt and Cement (without rebar).....	13
General Construction and Demolition Debris.....	13
Electronics, Computers, and TVs	14
Donate.....	14
Recycle	14
Furniture	15
Sell or Donate.....	15
Landfill.....	15
Glass	16
Not Recyclable	16
Holiday Lights	16
Light Bulbs	17

TABLE OF CONTENTS

Medicines and Sharps	18
Medication.....	18
Sharps.....	18
Paint and Paint Cans	19
Paint Cans	19
Latex Paint	19
Oil or Lead Based Paint.....	19
Paper and Cardboard	20
Pallets	21
Plastics	22
Accepted Plastics	22
Not Accepted Plastics	22
Compostable Plastics	22
Plastic film, bags, and wrap	23
Packing Peanuts	23
Pressurized Tanks	24
Gas (CO2) Cylinders	24
Helium Tanks	24
Propane Tanks.....	24
Scrap Metal	25
Smoke and CO Detectors	26
Smoke Detectors.....	26
Carbon Monoxide Detectors	26
Styrofoam	26
Steel, Tin, and Aerosol Cans	27
Steel or Tin Cans.....	27
Aerosol Cans.....	27
Tires	27
Thermostats and Thermometers	28
Thermostats	28
Thermometers.....	28
Yard Waste, Brush, and Mulch	29
Pickup.....	29
Drop Off	29
Curbside Recycling Info	30
Accepted	30
Not Accepted.....	30
Drop Site Recycling Info	31
Hours and Locations.....	31

AGRICULTURAL FILMS

Ag and Silage Plastic Recycling

Farms that produce more than 3,000 pounds of Ag plastic per year can request an 8-yard dumpster to be placed on their property, at no cost to the farm. Farms that produce less than 3,000 pounds a year are highly encouraged to partner with neighboring farms to share a dumpster.

A new program for smaller producers is now available. Recapture Recycling Bags can now be obtained from the company, each holds 200 lbs of plastic. When five of them are filled, the company will come to pick them up for free.

Revolution Plastics will collect the films on a set schedule or by appointment.

Sign up Online: www.revolutionplastics.com

Sign up by phone: (844) 490-7873



ALUMINUM CANS

Cans may be recycled using public or private drop-offs, curbside collection, or buyback centers. A list of scrap metal dealers can be found on the scrap Metal page.



Aluminum for Charity

Some non-profit organizations, like Ronald McDonald House Charities, collect tabs from aluminum cans for fundraising. Check with local organizations for details.

AMERICAN FLAGS

According to the United States Flag Code, any American flag that is worn, damaged, or tattered beyond repair should be disposed of in a respectful and dignified manner.

If you wish to dispose of a retired American flag please take to:

American Legion

634 Water Street
Eau Claire, WI 54703

Eau Claire County Courthouse

(Drop box outside main entrance)
721 Oxford Avenue
Eau Claire, WI 54703



The American Legion will properly dispose of all flags in a formal flag retirement ceremony. Worn and tattered flags can either be dropped off in the red, white, and blue mailbox outside the buildings or handed to a Legion member at the American Legion.

AMMUNITION

This company accepts used and unused ammunition, reloading supplies, and guns for recycling and proper disposal.

The Long Shot

106 E Lincoln Avenue
Fall Creek, WI 54742
(715) 877-1760



APPLIANCES

The following major appliances are banned from Wisconsin landfills:

- Air Conditioners
- Washers & Dryers
- Dishwashers
- Dehumidifiers & Humidifiers
- Freezers
- Furnace Boilers
- Microwave Ovens
- Stoves & Ovens
- Refrigerators
- Water Heaters

Donation

Large Appliances Habitat for Humanity

145 N Clairemont
Avenue
Eau Claire, WI 54703
(715) 895-8177

Small Appliances King's Closet

310 S Barstow Avenue
Eau Claire, WI 54701

Recycling and proper disposal of broken appliances can be done year-round at the following locations.

Contact the companies with questions and fee information.

First Choice Recycling

525 Park Ridge Court
Eau Claire, WI 54703
(715) 833-2005

See [Scrap Metal page](#) for details on local scrap recyclers who may accept appliances.



ASBESTOS

Materials containing asbestos can be disposed of at the Seven Mile Creek Landfill. A profile MUST be completed before asbestos waste can be accepted. Contact Advanced Disposal with questions.

Advanced Disposal Seven Mile Creek Landfill

8001 Olson Drive
Eau Claire, WI 54703
(715) 830-0284

As of November 2017, the charges for land-filling asbestos are as follows:

Profile fee: \$70.00

Disposal fee: \$125.00 for up to one ton, additional \$125.00 per ton beyond the first.

* All loads of asbestos must be weighed in and out and will be billed accordingly.



AUTO WASTE: BATTERIES AND FUEL

Antifreeze, lead-acid batteries, tires, motor oil, and oil filters are banned by state law from landfills.

Antifreeze and oil filters are accepted as part of the County Clean Sweep program, for a fee.

Motor oil and transmission fluid are accepted as part of Clean Sweep at no charge.

Empty motor oil containers are not recyclable and should be thrown into the trash.

Lead acid batteries (automotive batteries) may be taken to any retailer in Wisconsin who sells them. If you are not buying a battery, you may be charged a recycling fee by the store. Scrap yards also accept lead acid batteries, and depending on the market price of lead, may pay you a small amount.

Gas and fuel must be brought to Clean Sweep events.



BATTERIES

Alkaline - Dry Cell Batteries

Common household alkaline batteries (AA, C, D, etc.) can be disposed of in the trash or brought to Clean Sweep events for a fee.



Button and Lithium Batteries

Button batteries are commonly used in hearing aids and watches may be returned to jewelry stores or hearing aid businesses. Both lithium and button batteries can be recycled at a Clean Sweep Event.

Rechargeable Batteries

First Choice Recycling

525 Park Ridge Court
Eau Claire, WI 54703
(715) 833-2005

County Courthouse

721 Oxford Avenue
Eau Claire, WI 54703

Batteries + Bulbs

3115 East Hamilton Drive
Eau Claire, WI 54703
(715) 318-3246

Rassbach Communications

405 N Hastings Plaza
Eau Claire, WI 54703
(715) 832-6763

Best Buy

4090 Commonwealth Avenue
Eau Claire, WI 54701
(715) 833-0666

Verizon Wireless

3755 Oakwood Mall Drive
Eau Claire, WI 54701
(715) 835-7370



BICYCLES

Donate or Sell

Bicycles that are in working order can be sold or donated. Check with local charities for interest in bicycles. These items can also be sold through social media sites. Please take precautions if utilizing these services.



Recycle

Any non-working bicycle can be recycled free of charge at scrap yards. They can also be placed in the scrap metals boxes located at the Bridge Creek and Union transfer stations and the Seven Mile Creek Landfill.

Bike Tires

Tires can be recycled for a very small fee:

Eau Claire Bike and Sport

403 Water Street
Eau Claire, WI 54703
(715) 832-6149



BOOKS AND MAGAZINES

Donate

Take books to Goodwill, Hope Gospel, or check with your local library to see if they are interested in the books.



Hardcover Books

The covers of hardcover books are not recyclable as they are a combination of paper, fabric, and occasionally plastic. You can cut the covers off, and recycle the inner pages with your regular recycling.

Soft cover Books

These are readily recyclable in your regular recycling, curbside or drop off.

Magazines

These can be recycled in large quantities at our drop sites. Hours and Locations can be found here. Small numbers can go in your curbside bin. Please remove any plastic sleeves.

CARPET

Reuse

Habitat for Humanity
145 N Clairemont Avenue
Eau Claire, WI 54703
(715) 895-8177

Landfill

Seven Mile Creek Landfill -
Advanced Disposal
Special Fees Apply



CLOTHING

Donate

Hope Gospel Mission

2511 Moholt Drive
Eau Claire, WI 54703
(715) 839-9498

Savers

2833 Mall Drive
Eau Claire, WI 54701
(715) 835-8500

King's Closet

310 S Barstow Street
Eau Claire, WI 54701

Bethesda Thrift Shop

3718 London Road
Eau Claire, WI 54703
(715) 834-7875

Goodwill Industries

3605 Gateway Drive
Eau Claire, WI 54701
(715) 835-0532



Donation sites also accept unwearable clothing. Mark clearly as "Recycling" and they will add it to their bales to be recycled.

Consignments / Resale

Once Upon a Child

4058 Commonwealth Avenue
Eau Claire, WI 54701
(715) 514-4730

Here We Grow Again Consignment Sale

915 Menomonie Street
Eau Claire, WI 54703

Plato's Closet

3561 Gateway Drive
Eau Claire, WI 54701
(715) 836-7800

Cherry Pickers

Oakwood Mall
4800 Golf Road
Eau Claire, WI 54701
(715) 514-3566

CONSTRUCTION AND DEMOLITION DEBRIS

Reusable Construction Materials

Reusable materials can be donated to local charities. This includes doors, windows, kitchen and bath cabinets, plumbing fixtures, appliances, new carpet and carpet tiles, pavers, and other miscellaneous building items in new and good condition.

Hope Gospel Mission

2108 Western Avenue
Eau Claire, WI 54703
(715) 838-2084

Habitat for Humanity ReStore

145 N Clairemont Ave
Eau Claire, WI 54703
(715) 895-8177

Roofing Shingles

Senn Blacktop

12154 40th Avenue
Chippewa Falls, WI 54729
(715) 723-8527

*\$40.00 per load fee

Asphalt and Cement (without rebar)

Red Flint Rock & Stone

717 Short Street
Eau Claire, WI 54701
(715) 855-7750

*\$20.00 per load fee

General Construction and Demolition Debris

Includes concrete, wood, siding, brick, shingles, windows, plaster, and masonry

Advanced Disposal Seven Mile Creek Landfill

8001 Olson Drive
Eau Claire, WI 54703
(715) 830-0284

*Standard tipping fees apply.

ELECTRONICS, COMPUTERS, AND TVS

It is illegal to send electronics to the landfill. These products are considered hazardous materials by the EPA. Electronics must be appropriately recycled.

Donate

Habitat for Humanity ReStore

145 N Clairemont Avenue
Eau Claire, WI 54703
(715) 895-8177



Recycle

First Choice Recycling

525 Park Ridge Court
Eau Claire, WI 54703
(715) 833-2005

Best Buy

4090 Commonwealth Avenue
(715) 833-0666
*Size limit on TVs

There are no locations or times of the year when televisions can be recycled for free. Plan for the longevity of your device when making your purchase, so the bite of the fee does not sting so much.

E-CYCLE
WISCONSIN



FURNITURE

Sell or Donate

Habitat for Humanity

145 N Clairemont Avenue
Eau Claire, WI 54703
(715) 895-8177

Hope Gospel Mission

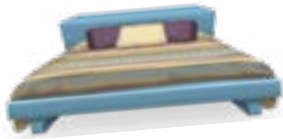
8 South Farwell Street
Eau Claire, WI 54703
(715) 552-5566

Goodwill Industries

3605 Gateway Drive
Eau Claire, WI 54701
(715) 835-0532

Savers

2833 Mall Drive
Eau Claire, WI 54701
(715) 835-8500



Local churches and other nonprofit organizations may also take these items. Note that most will not accept mattresses. Contact the organization for details.

Landfill

Waste haulers offer a free limited bulk item pick-up twice a year: spring and fall. Call your hauler for details and availability.

The following options are available year-round:

- Your garbage hauler will pick up most large items for an additional fee.
- Bring the item(s) directly to Seven Mile Creek Landfill. There is a fee for disposal.
- Bring the item(s) to a town transfer station. There is a fee for disposal.

GLASS

All colored container glass bottles and jars are accepted (e.g. jelly, spaghetti sauce, beer, and wine bottles). Rinse all containers; labels do not need to be removed. Do remove lids and put lids in the trash.

Please do not place broken glass in the recycling bin, as it can be a hazard for the sanitation workers. This should be placed in the trash.

Not Recyclable

These items have chemical compositions that make them incompatible for recycling with container glass:

- Windows
- Ceramics
- Cookware
- Light bulbs
- Drinking glasses
- Mirrors
- Eye glasses



HOLIDAY LIGHTS

Eau Claire County Recycling sponsors a holiday light collection each winter. The collection starts around America Recycles Day (November 15) and runs through the middle of January.

County Courthouse Main Entrance

721 Oxford Avenue
Eau Claire, WI 54703

We accept:

- Electrical cords
- Strands of holiday lights
- Telephone cords
- Appliance cords

We do not accept:

- Cord adapters
- Battery packs
- Plastic rope lights
- Compact Fluorescent Lights



LIGHT BULBS

WRR Environmental Services accepts all size and types of light bulbs during County sponsored Clean Sweep Events. Fees do apply.

The business listed below will accept specific light bulbs any time of the year. Contact the business with questions.

Batteries Plus

3115 East Hamilton Avenue
Eau Claire, WI 54701
(715) 318-3246



MEDICINES AND SHARPS

Medication

Drop off medications at the sites below.

Augusta City Hall
145 W. Lincoln Street
Mon-Fri, 8:00am to 4:00pm
(715) 286-2555

Eau Claire Jail Lobby
2nd Avenue entrance
Mon-Fri, 8:00am to 4:30pm
(715) 839-4709

Altoona Emergency Services
904 Spooner Avenue
Mon-Fri, 7:30am to 4:00pm
(715) 839-6090

Fall Creek Village Hall
22 E. Lincoln Avenue
Mon-Fri, 8:00am to 4:30pm
(715) 877-2177

Eau Claire Courthouse
721 Oxford Avenue
Mon-Fri, 8:00am to 4:30pm
(715) 839-4709

Drop off expired and unwanted medications during business hours, year round.

DOSE OF REALITY Anonymous, no questions.

Medication Disposal

Sharps

Sharps are a biohazard, and must be handled very carefully.

The DNR has information on how to handle sharps when you don't have a red container on their website.

Sharps need to be collected in red containers. These can be acquired from most pharmacies. Speak with your doctor about where you can dispose of the full containers. Most pharmacies will NOT accept full containers.



PAINT AND PAINT CANS

Paint Cans

Metal paint cans that have a slight residue of paint left over can be recycled through a scrap metal dealer. Plastic paint cans must be landfilled.

Latex Paint

Donate

If you have paint that you no longer need but is a nearly full container, you may be able to donate it at one of the following organizations:

Hope Gospel Mission
8 South Farwell Street
Eau Claire, WI 54703
(715) 552-5566

Habitat for Humanity
145 N Clairemont Avenue
Eau Claire, WI 54703
(715) 895-8177

Dry and Landfill

Drying paint prevents liquid from leaching down into the water tables. The following are suggestions for drying paint. Whenever drying paint, make sure it is in a well-ventilated, sheltered location away from children and pets.

As a last resort, both latex and oil paint are accepted through the Clean Sweep program but there is a charge of \$1.00 - \$4.00 per can for latex paint depending on the size of the can.

Oil or Lead Based Paint

Bring these items to a Clean Sweep event for proper disposal. There is no fee for oil or lead based paints.



PAPER AND CARDBOARD

The following paper materials are accepted:

- Egg cartons
- Spiral notebooks
- Paperback books
- Brown paper bags
- Cereal or cracker boxes
- Construction paper
- Office paper
- Mail
- Cardboard boxes
- Magazines
- Newspaper
- Catalogs
- Phone Books
- Box board

To be recycled, cardboard must be clean. If contaminated with grease, oil, paint, food or coated with wax, they cannot be accepted and should be thrown away. Packaging materials sometimes found in cardboard boxes such as Styrofoam and plastic bags must be removed.

PALLETS

In Wisconsin alone, over 150,000 tons of pallets are land-filled each year. They are expensive to dispose of in large quantities. The following companies take these for grinding:

Menards

(715) 876-2151

Specialty Pallet and Crate

205 East Street
Boyceville, WI 54725
(715) 643-2064



Reuse

Consider reusing your pallets instead of disposing them. Pallets can be reused in a wide variety of ways. A little creativity and some time on Pinterest will provide numerous options.

PLASTICS

Accepted Plastics

Plastic containers #1, #2, #3, #4, #5, and #7 are accepted for recycling throughout Eau Claire County.

However, that does not mean that all plastic items are recyclable.

Not Accepted Plastics

- Plastic bags or film - bring these to the stores that take them.
- Toys or hangers
- 5-gallon buckets and other large containers
- Motor oil or transmission fluid bottles
- Black plastics
- Squeeze tubes
- Polystyrene (Number 6 plastics): Packing peanuts, egg cartons, cups, etc.
- Cookware or dishes
- Light bulbs
- Some freezer and refrigerator food boxes (check box for recycling instructions)
- Wax/plastic coated boxes: Milk and juice cartons
- Greasy pizza boxes
- Napkins, tissues, gift wrap

Compostable Plastics

Compostable plastics should NEVER be put with your curbside recycling or plastic film drop offs! Take them to the appropriate commercial composting site.



PLASTICS

Plastic film, bags, and wrap

These CAN be recycled, just not through your curbside hauler or the recycling drop off site. These materials should be kept separate and brought to a retailer that collects them. Visit www.plasticfilmrecycling.org for drop off locations.

Plastic Film includes:

- Air Pillows (popped)
- Bread Bags
- Case Wrap
- Cereal Liners
- Dry Cleaning Bags
- Food Storage Bags (ex. Ziploc bags)
- Newspaper Bags
- Produce Bags
- Retail and Grocery Bags
- Tyvek Envelopes
- Plastic Wraps



Packing Peanuts

Packing peanuts, whether they are made from Styrofoam or corn starch, are accepted at the following businesses on an as needed basis:

Automation Displays

(715) 834-9595

Country Treasures

(715) 723-8883

Pak Mail

(715) 831-8808



PRESSURIZED TANKS

Gas (CO2) Cylinders

Because they are pressurized, these must be handled carefully whether they are being refilled or discarded.

First Strike Paintball Games

10327 County Highway X
Chippewa Falls, WI 54729
(715) 577-1488

Helium Tanks

Once a helium tank has been properly emptied it may be taken to a scrap metal dealer. Instructions from Balloon Time on how to empty a helium tank can be found online.

Warning: Inhaling helium can be dangerous to your health.

Propane Tanks

Empty 20 pound canisters can be recycled at scrap yards. They are not accepted at the county's recycling drop-off stations or by the haulers providing curbside recycling services. They can also be taken to Clean Sweep events 2-3 times throughout the year.



SCRAP METAL

These companies accept miscellaneous metal for recycling, including iron, steel, brass, copper and aluminum. Some may accept major appliances such as stoves and microwave ovens. These companies may pay you for the metal.

Cooley Statewide Scrap & Salvage

1230 S 82nd Avenue
Eau Claire, WI 54703
(715) 832-7163

Alter Metals

3532 White Avenue
Eau Claire, WI 54703
(715) 832-3431

Spickler's

1329 Western Avenue
Eau Claire, WI 54703
(715) 835-0490

Northern Metal Recycling

8010 Olson Drive
Eau Claire, WI 54703
(715) 834-6677

Scrap metal boxes are also found at three drop site locations

- Town of Union transfer station
- Town of Seymour recycling site
- Seven Mile Creek landfill

Miscellaneous Scrap Metal Items

- Aluminum foil (clean)
- Aluminum pie pans (clean)
- Bolts, nuts, screws, & nails
- Door handles
- Hinges
- Lawn chair frames
- Paper clips & staples
- Pots and pans



SMOKE AND CO DETECTORS

Smoke Detectors

Many smoke detectors contain trace amounts of radiation and therefore it is recommended that you return them to their manufacturer for proper disposal. Manufacturer's addresses are usually listed on the product warranty, in the user's manual or on the original box. Return policies may differ among manufacturers, so calling the company prior to mailing is suggested.

Before disposing of smoke detectors, remove any batteries. See our Battery Recycling Page for how to dispose of the batteries.

Carbon Monoxide Detectors

These are electronics and cannot be put in the trash. Bring them to an electronics recycler.

First Choice Recycling

525 Park Ridge Court
Eau Claire, WI 54703
(715) 833-2005
Website



STYROFOAM

There are no options in the region to recycle Styrofoam. Put this material in the trash.



STEEL, TIN, AND AEROSOL CANS

Steel or Tin Cans

In addition to curbside and drop-off collections, metal cans can be brought to scrap metal dealers. Cans should be rinsed. Crush cans whenever possible.

Aerosol Cans

Empty aerosol cans can be recycled curbside or at a drop-off location. Some curbside haulers may not accept these. Please contact your hauler for additional information.

TIRES

Tires should not be put in the landfill. They can be recycled at several locations that sell tires. There is a fee for disposal. Fees vary based on size of the tire, and the company recycling them.

All Season Tire

1102 Menomonie Street
Eau Claire, WI 54703
(715) 835-7555

Auto Care Center

1712 N Clairemont Avenue
Eau Claire, WI 54703
(715) 834-8040

Bauer Built

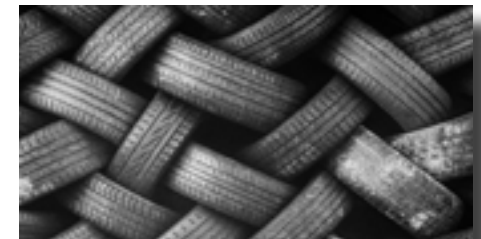
3014 Mall Drive
Eau Claire, WI 54701
(715) 834-4106

Youngstedts Eau Claire Automotive Service and Tire

3330 Mall Drive
2521 N Clairemont Avenue
Eau Claire, WI
(715) 834-2661
(715) 830-2000

Tires Plus

3440 E Hamilton Avenue
Eau Claire, WI 54701
(715) 834-8711



THERMOSTATS AND THERMOMETERS

Thermostats

Mercury

Eau Claire County residents can recycle these as part of the county's Clean Sweep program or at the following locations:

First Supply Eau Claire

596 Cameron Street
Eau Claire, WI 54703
(715) 832-6638

United Refrigeration

2618 Birch Street, Suite B
Eau Claire, WI 54703
(715) 834-9704

Gustave A. Larson Co.

2456 Morningside Drive
Eau Claire, WI 54751
(262) 542-0200

Digital Thermostats

Drop them off at First Choice Computer Recycling.

Thermometers

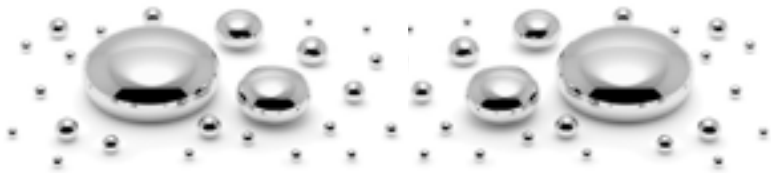
Alcohol

You can tell the difference by the color, an alcohol thermometer is either red or blue. Alcohol thermometers are safe to throw away in the trash.

Mercury

The only option available to residents to recycle thermometers is to take them to one of the Clean Sweep events held annually each year.

Visit the EPA's website to learn how to properly clean-up mercury spills. (Never use a vacuum cleaner!)



YARD WASTE, BRUSH, AND MULCH

Pickup

Twice per year, in the first full weeks of May and November, the haulers will pick up yard waste if you have a curbside contract.

Rules:

- Bags MUST be paper or compostable plastic, acquire from a local hardware store
- Twigs and branches must be bundled separately
- Limit for free pickup is 10 bags, additional bags have additional fees
- Leaves, grass, and weeds only, no rocks or soil



Drop Off

Eau Claire County has contracted with Boxx Sanitation to operate the Jeffers Road Brush Site. Opening/Closing dates are subject to change based on weather. The site is typically open mid-April to mid-November.

Located 3/4 mile north of North Crossing on Jeffers Road (has no physical address).

The Yard Waste Directory, a list of individuals in the county who will accept certain yard waste materials, including pine needles, logs, brush, grass, leaves, and branches can be found on the county recycling website.



CURBSIDE RECYCLING INFO

There are 5 hauling companies who provide recycling and trash pickup services in the county. Not all haulers may service all regions of the county.



Accepted

- Aluminum cans
- Tin/ steel cans
- Glass bottles & jars
- #1, #2, #3, #4, #5, and #7 plastic containers
- Cardboard
- Mixed paper



Not Accepted

- Plastic bags or film *
- Toys or hangers
- 5-gallon buckets
- Motor oil or transmission fluid bottles
- Polystyrene (Number 6 plastics): Packing peanuts, egg cartons, cups, etc.
- Cookware or dishes
- Light bulbs *
- Some freezer and refrigerator food boxes (check package for options)
- Wax coated boxes: Milk and juice cartons
- Greasy pizza boxes
- Napkins, tissues, gift wrap
- Electronics *

* Items should be recycled in other locations

DROP SITE RECYCLING INFO

There are several sites throughout the County where residents can bring their recyclables for disposal, at no cost. The materials accepted are the same as the curbside haulers listed above. Bridge Creek, Drammen, Ludington, and Union accept residential garbage for a fee. Contact the town directly for additional information and fees.

Hours and Locations

Site	Location	Hours
Bridge Creek	S9515 Hwy 27, Augusta	Saturdays 8:00 am - 1:00 pm
Brunswick	W3020 Mitchell RD, Eau Claire	Saturdays 9:00 am - 12:00 pm
Drammen	W6505 County Rd ZZ, North of 37	Saturdays 9:00 am - 12:00 pm
Fairchild	121 Emery Street, Fairchild	Wednesdays 8:00 am - 12:00 pm Saturdays 8:00 am - 12:00 pm
Foster	S12785 Wren RD, Osseo	1st & 3rd Saturdays of month 8:00 am - 12:00 pm
Lincoln	S5555 Greenmeadow RD, Fall Creek	2nd & 4th Saturdays of month 9:00 am - 1:00 pm
Ludington	N956 Town Shop RD, Fall Creek	1st & 3rd Saturdays of month 8:00 am - 12:00 pm
Pleasant Valley	S10434 Cty Hwy HHI, Pleasant Valley	2nd & 4th Saturdays of month 8:00 am - 12:00 pm
Seymour	8011 Olson Drive, Eau Claire	Tuesdays 12:00 pm - 4:00 pm Saturdays 8:00 am - 12:00 pm
Union	1882 White Pine Dr., Union	Wednesdays 1:00 pm - 5:00 pm Saturdays 9:00 am - 5:00 pm
Wilson	E26936 Cty RD G, Stanley	Saturdays 8:00 am - 12:00 pm

**IS SOMETHING MISSING? EMAIL
RECYCLING@CO.EAU-CLAIRE.WI.US
WITH QUESTIONS OR SUGGESTIONS FOR
ADDITIONAL ITEMS!**

