

Highlights from 2015

Jail Population

The Eau Claire County Jail saw a 5.7% increase in bookings from 2014 to 2015

The Total Average Daily Population decreased 5.9% from 2014 to 2015

Jail Bookings for offenders with methamphetamine charges increased from 232 in 2014 to 329 in 2015 (41.8%)

In 2015, 16.8% of Jail Bed Days were consumed by offenders with methamphetamine charges, compared to 5.5% in 2012 and 2.0% in 2011

The Secure Population saw a significant increase at the end of 2015 and ended the year above functional capacity

District Attorney's Office

Clearance Rate for all criminal cases in 2015 was 101%, compared to 96% in 2012

Increase in criminal dispositions each of the last three years, despite an increase in criminal case filings each year since 2011

In 2015, closed 408 more felony cases (49.5% increase) and 596 more total criminal cases (21.8% increase) than 2012

Misdemeanor case filings have dropped more than 12% since 2010

After completing its fourth successful year in 2015, the Pre-Charge Diversion Program has now seen more than 1,000 participants complete the program and has collected more than \$25,000 in restitution

An evaluation of the Pre-Charge Diversion Program was updated in January 2016 to include two-year recidivism rates and again showed the program is having a significant impact on recidivism

Community Transitions Center (CTC)

Continues to effectively monitor pretrial inmates that would otherwise be held in the Eau Claire County Jail on cash bonds

The CTC saved Eau Claire County 17,538 jail bed days in 2015 (note: jail bed days saved are tracked and calculated from start date to end date at CTC, potentially inflating the number of days participants would have actually sat in jail)

Over the past three years, the CTC has administered more than 40,000 total UA/BA tests

In 2015, less than 5% of all UA/BA tests came back positive

The CTC has monitored more than 400 individuals each of the last three years

Community Service

On January 1, 2015, a new fee schedule was adopted. As a result, the program collected nearly \$25,000 in surcharges, which is a 13.2% increase from 2014.

The program also saw completions increase from 208 in 2014 to 280 in 2015

Eau Claire County Jail Population

The Eau Claire County Jail saw a slight decrease in its Average Daily Population (ADP) from 2014 to 2015, but both years saw concerning spikes. The 2014 Total ADP was the largest since 2009 and the Secure Population surpassed the functional capacity in both May 2014 and December 2015. The Huber facility is far below capacity and efforts are being made to increase the accessibility of the treatment services in Huber. The jail population, as well as the treatment and service needs of the inmates, has been significantly impacted by the rise in methamphetamine.

Average Daily Population	2015	2014	2013	2012	2011	2010	2009
Total	253	269	235	209	220	245	269
In-House Secure	176	186	156	123	105	100	105
Secure Transfers*	8	8	6	20	32	38	47
Total Secure	184	194	162	143	137	138	152
Huber	61	63	57	53	72	87	98
Electronic Monitoring	5	9	10	9	6	12	14

* Since the jail expansion in 2012, Secure Transfers are housed in other counties at no cost to Eau Claire County

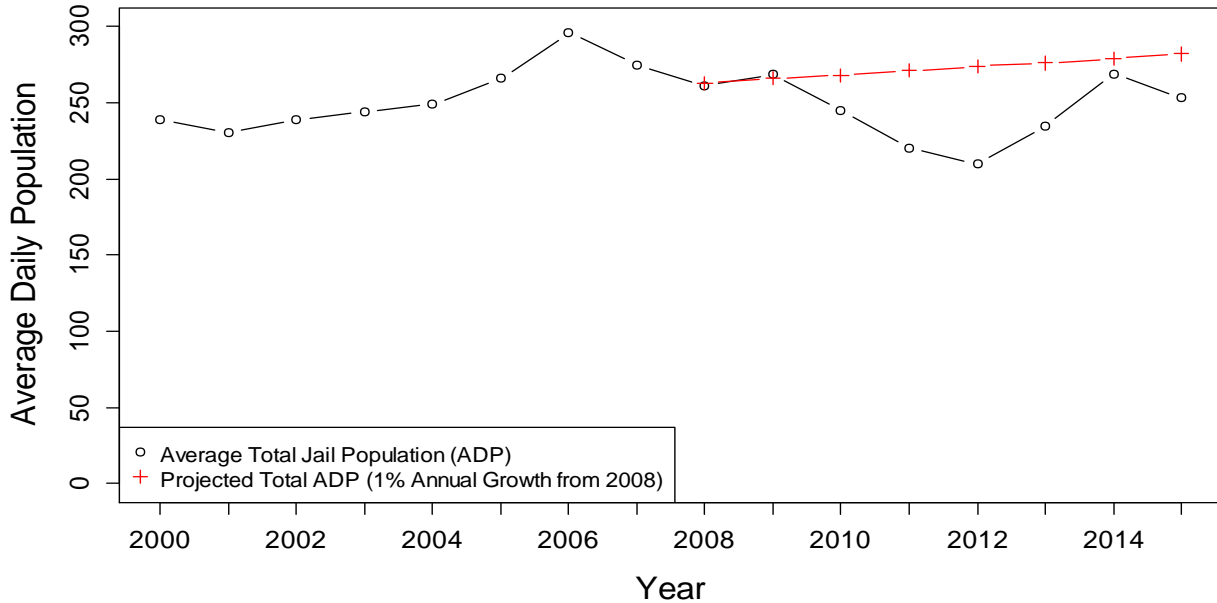
Eau Claire County Jail Population

The number of bookings and jail bed days consumed by offenders facing methamphetamine charges has more than tripled from 2012 to 2015. At the end of 2015, there were more methamphetamine-involved inmates than OWI-involved inmates in the jail; this is a trend that has never been seen in Eau Claire County. Jail Bed Days are calculated for each booking to determine the time spent in the Eau Claire County Jail for a specified calendar year. For each booking, jail bed days include only days incarcerated during the specified calendar year. Methamphetamine or OWI involvement is determined by charges listed at each booking. Calculations include all stages of legal process (i.e. pretrial, sentenced, probation holds, etc.).

Jail Bed Days	2015	2014	2013	2012	2011
Jail Bookings					
Total	4751	4496	4556	4049	4247
Meth-Involved	329	232	154	85	43
% Meth-Involved	6.9%	5.2%	3.4%	2.1%	1.0%
OWI-Involved	802	819	958	879	961
% OWI-Involved	16.9%	18.2%	21.0%	21.7%	22.6%
Jail Bed Days					
Total	91,398.6	97,710.0	85,449.6	77,514.1	81,135.5
Meth-Involved	15,352.3	13,780.8	6,875.2	4,230.3	1,640.5
% Meth-Involved	16.8%	14.1%	8.0%	5.5%	2.0%
OWI-Involved	17,011.7	19,851.9	21,347.7	19,621.2	23,743.7
% OWI-Involved	18.6%	20.3%	25.0%	25.3%	29.3%

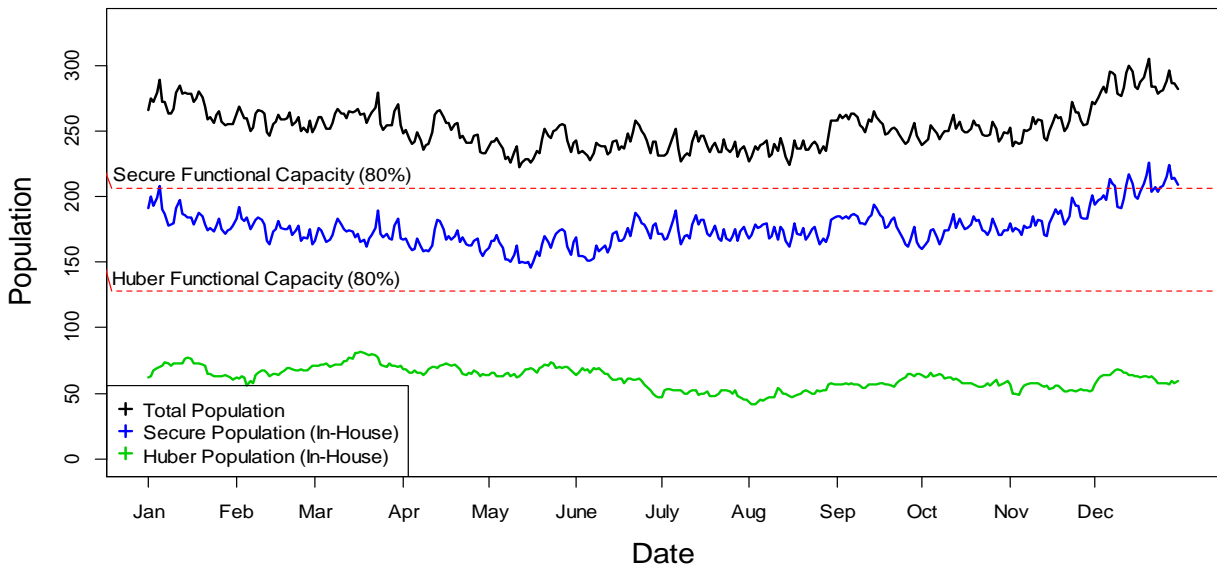
In 2008, a goal was set to limit the total jail population to a maximum of 1% annual growth. Despite significant spikes in the Secure Population in the Summer of 2014 and the Winter of 2015, the Annual Total Average Daily Population (ADP) is still significantly below the mark projected by 1% annual growth since 2008.

Eau Claire County Jail - Total Population



The Secure Population again surpassed functional capacity in December 2015. The District Attorney's Office saw significant increases in methamphetamine and felony bail jumping charges, which led to increases in the number of Bench Warrants issued and Cash Bonds set (see page 4).

Eau Claire County Jail Daily Population 1/1/2015 - 12/31/2015



District Attorney's Office

The Eau Claire County District Attorney's Office has seen an increase in the number of criminal cases opened in each of the last four years, as well as a significant shift to a higher percentage of felony cases. Despite the increase in volume and severity, the DA's office has still closed more criminal cases in each of the last two years and the Clearance Rate reached 101% in 2015 (96% in 2012). Felony case dispositions increased 49.5% from 2012 to 2015. Misdemeanor case filings have dropped more than 12% since 2010. There are many contributing factors that have led to this level of efficiency, including, but not limited to, the success of the Pre-Charge Diversion and DAGP programs, system-wide use of the COMPAS Assessment, and effective use of the Community Transitions Center (CTC).

Circuit Court	2015	2014	2013	2012	2011	2010	2009
Cases Opened							
CF	1281	1164	963	929	852	852	844
CM	1549	1493	1562	1551	1505	1764	1867
CT	500	483	579	540	527	673	823
Total	3330	3140	3104	3020	2884	3289	3534
Dispositions							
CF	1232	1113	915	824	790	908	1005
CM	1574	1502	1492	1412	1546	1823	2060
CT	518	507	582	492	566	772	871
Total	3324	3122	2989	2728	2902	3503	3936
Bonds*							
Cash Bonds Set	768	687	625	509			
Signature Bonds Signed	2722	2600	2658	2639			
Bench Warrants Issued	1032	813	762	702			

*Data for bonds and warrants are pulled per criminal case, not per defendant

Rise in Methamphetamine

The District Attorney's Office has seen the number of methamphetamine cases more than triple since 2012. Annual methamphetamine cases are determined by the number of criminal cases opened in a calendar year for charges that include reference to methamphetamine or amphetamine. Co-defendants are given their own case number and are, therefore, counted separately.

District Attorney's Office	2015	2014	2013	2012	2011
Methamphetamine Cases	225	159	118	66	40

JRI/OWI Program

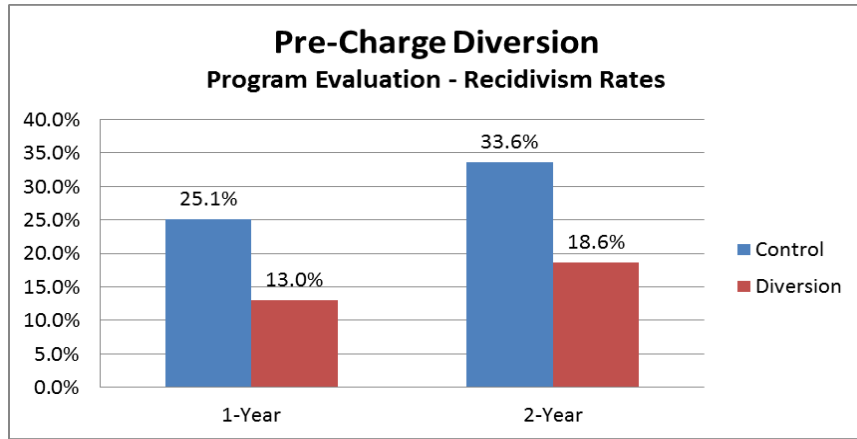
The newly formed (September 2014) JRI/OWI Program focuses on providing offender with more upfront assessment and access to treatment. The program has already received more than 100 referrals, and has seen great early success. In 2015, the graduation rate was 84%, which saved Eau Claire County nearly 5,000 jail bed days.

Charge	Completions	Terminations	Jail Bed Days Saved
OWI(2)	18	8	290
OWI(3)	19	1	1,559
OWI(4)	12	0	2,932
Total	49	9	4,781

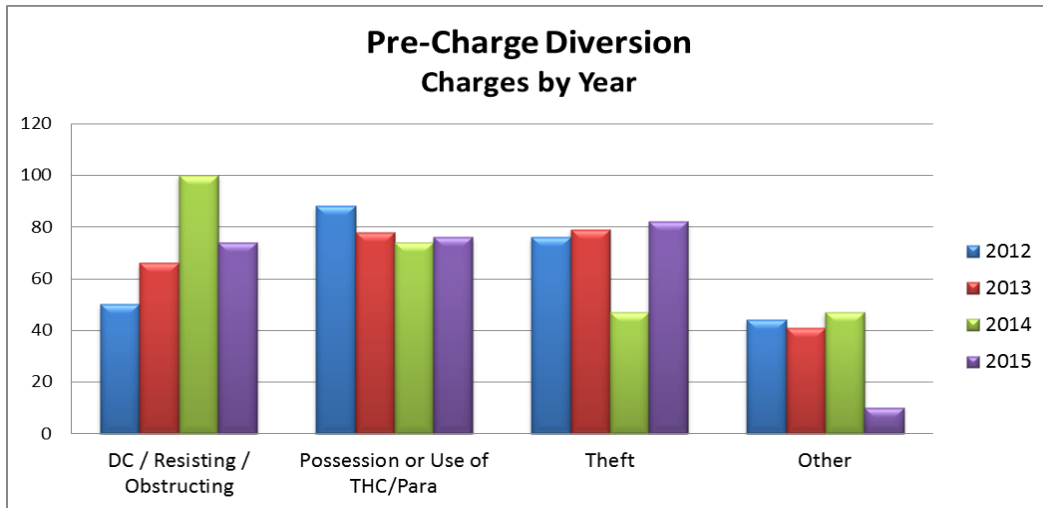
Pre-Charge Diversion Program

The Eau Claire County Pre-Charge Diversion Program has now seen more than 1,000 offenders complete the program and has collected more than \$25,000 in restitution since 2012. In January 2016, the program evaluation (first completed in December 2014) was updated to include 2-Year recidivism rates. Once again, the program has proven to have a significant impact on recidivism for program participants. As research suggests and local results have proven, diverting low-risk, first time offenders out of the criminal justice system lowers recidivism and preserves limited resources that can be better spent on higher risk individuals. The full program evaluation and more information about the program can be found on the county website.

Pre-Charge Diversion Program	2015	2014	2013	2012
Completions	242	268	264	258

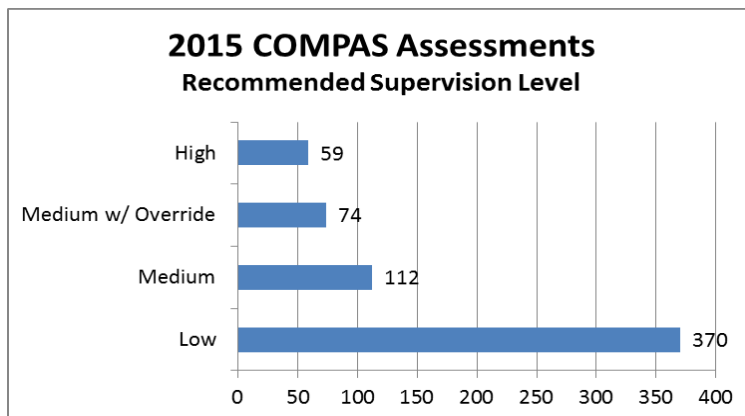


The graph below depicts the charges that are seen by the program each year. The majority of cases that are referred to the program involve charges that fall into three categories: Disorderly Conduct, Possession of THC, and Theft.

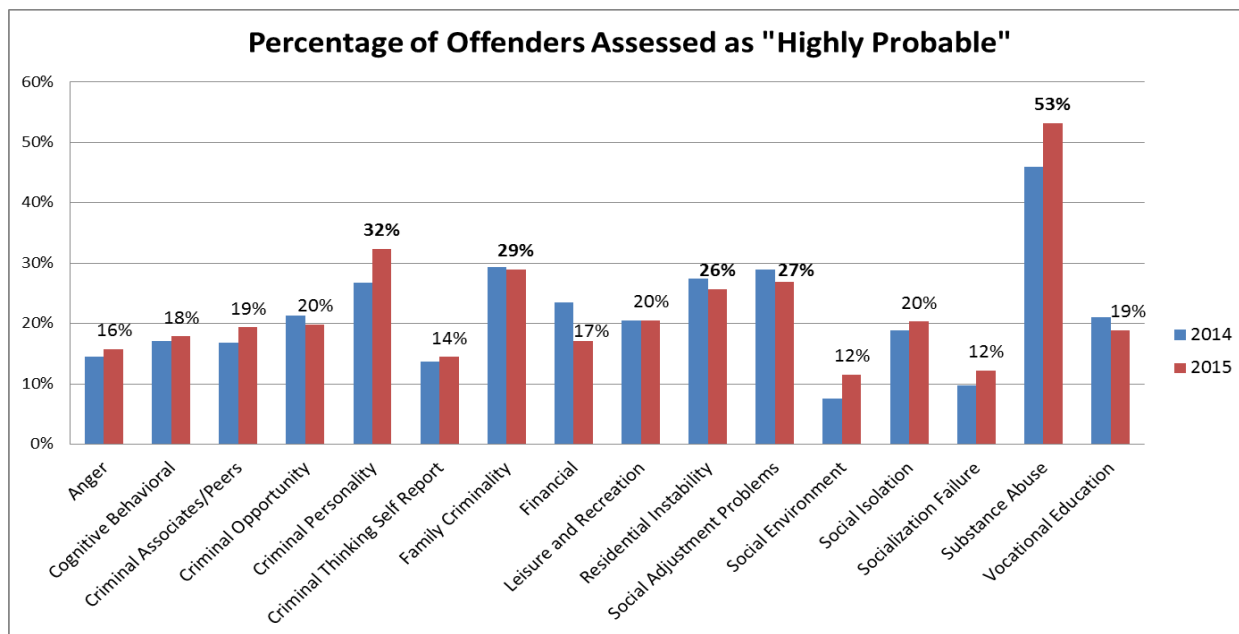


COMPAS Assessments

In 2015, through contract with the CTC and Lutheran Social Services (LSS), Eau Claire County administered 615 Core COMPAS Assessments to defendants prior to case disposition. The graph below shows the breakdown of Recommended Supervision Level for all 2015 COMPAS Assessments. After seeing such a large number of individuals being assessed as Low Risk, changes were made to more efficiently assess offenders going through the criminal justice system. Individuals participating in the JRI/OWI program no longer receive a COMPAS Assessment. Instead, participants receive AODA assessment that is used to determine programming needs.



The graph below shows the percent of evaluations that scored Highly Probable for each criminogenic need. The five most prevalent criminogenic needs have been consistent each of the last three years, but there was a significant increase in the percent of offenders assessed as Highly Probable for Substance Abuse.



Community Transitions Center (CTC)

The Community Transitions Center continues to be a vital component to the criminal justice system in Eau Claire County. Many of the offenders that are referred to the CTC for testing would otherwise be sitting in the county jail on a cash bond. In 2015, the supervision of Bond and Electronic Monitoring clients at CTC saved Eau Claire County 17,538 jail bed days. The decrease in referrals and UA/BA tests administered since 2013 shows the improvements that have been made in identifying appropriate individuals for reporting. In 2015, less than 5% of all UA/BA tests came back positive. Random testing is also a key component to the new JRI/OWI Program and the CTC monitored 89 program participants in 2015. Jail bed days saved are tracked and calculated from the day an offender starts at CTC until the day they are discharged, potentially inflating the number of days each participant would have actually sat in jail.

Community Transitions Center	2015	2014	2013	2012
Referrals Receiving Services	451	416	494	329
UA/BA Tests Administered	12,556	10,265	17,949	16,726
Positive UA/BA Tests	613	630	1,067	1,065
Percentage of Positive Tests	4.9%	6.1%	5.9%	6.4%
Population - Referral Source*				
Bond	206	183	2015 Jail Bed Days Saved: 17,538	
DAGP	12	30		
DOC	136	168		
Electronic Monitoring	48	54		
JRI/OWI	89	n/a		
Pretrial	1	n/a		
Huber	8	n/a		
Total	451	416		

* Individuals may be referred by multiple sources, so the total referrals may differ from the sum of all referral sources

CTC Recidivism

The recidivism rates in the table below are limited to offenders that successfully completed programming at the CTC and subsequently received criminal charges in Eau Claire County within a one-year follow-up period. The participants are a combination of Bond, DAGP, DOC, and Electronic Monitoring clients. The recidivism rates were again below the performance goal of 30%. In addition, the recidivism rate for all clients that were referred to the CTC for Testing Only (and successfully discharged) was only 22.9%. The use of the CTC has proven to be an effective way to monitor clients with substance abuse issues.

Community Transitions Center	2014	2013	2012
Successful Completions	163	157	98
New Criminal Charges*	43	45	30
Recidivism Rate	26.4%	28.7%	30.6%

* New Charges and Recidivism Rates are measured for a 12-month period from date of discharge and include all criminal charges filed in Eau Claire County